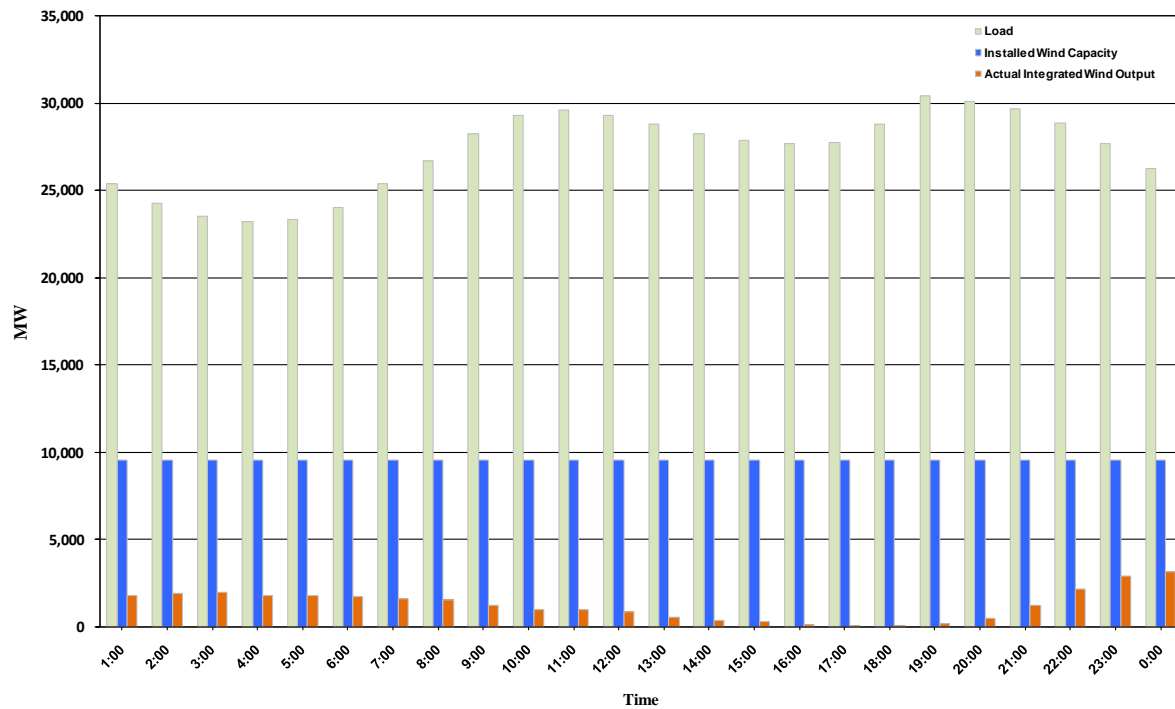




ERCOT Grid Operations Wind Integration Report: 11/13/10

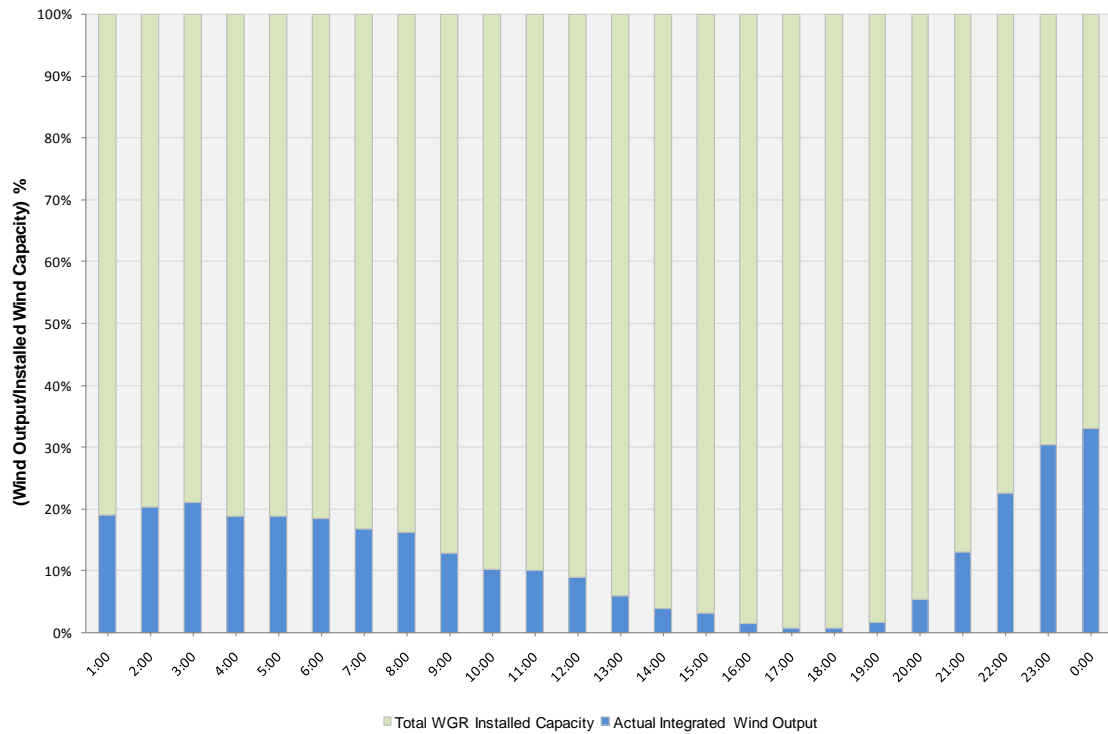
Peak Load	30,423 MW
Load Peak Hour	19
Wind Record 06/12/10	7016 MW
Max Wind value	3217 MW
Wind Peak Hour	23:42:08
Wind Integration %	12.38

Hourly Average Actual Load vs. Actual Wind Output
11-13-2010

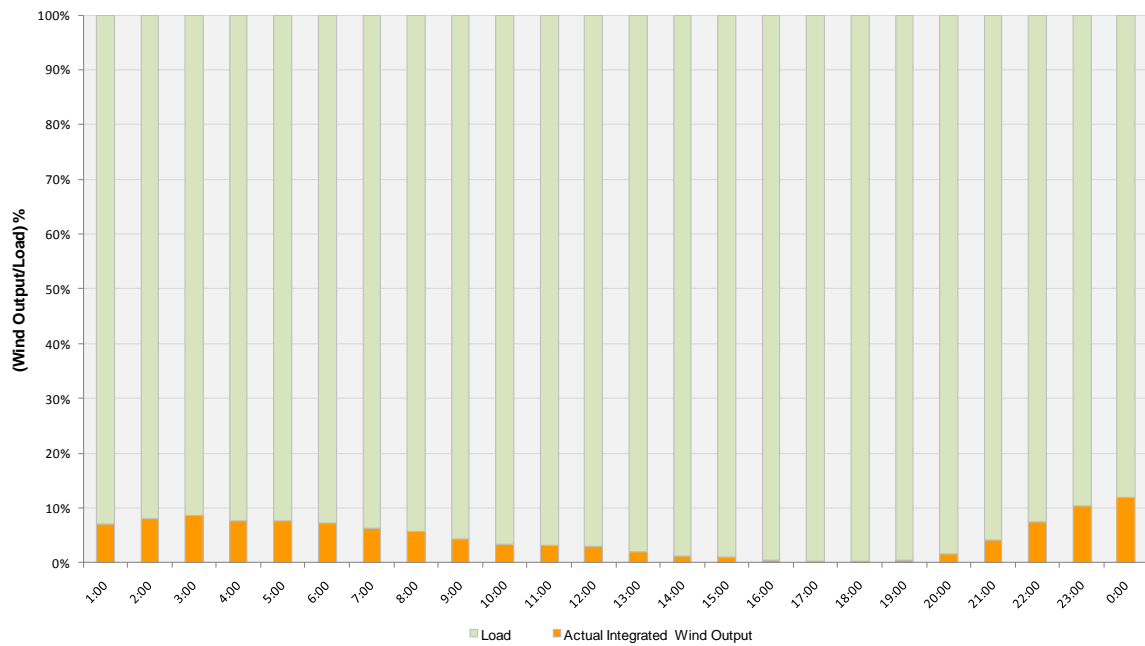




Actual Wind Output as a Percentage of the Total Installed Wind Capacity
11-13-2010



Actual Wind Output as a Percentage of the ERCOT Load
11-13-2010





ERCOT Load vs. Actual Wind Output 11/6/10 - 11/13/10

